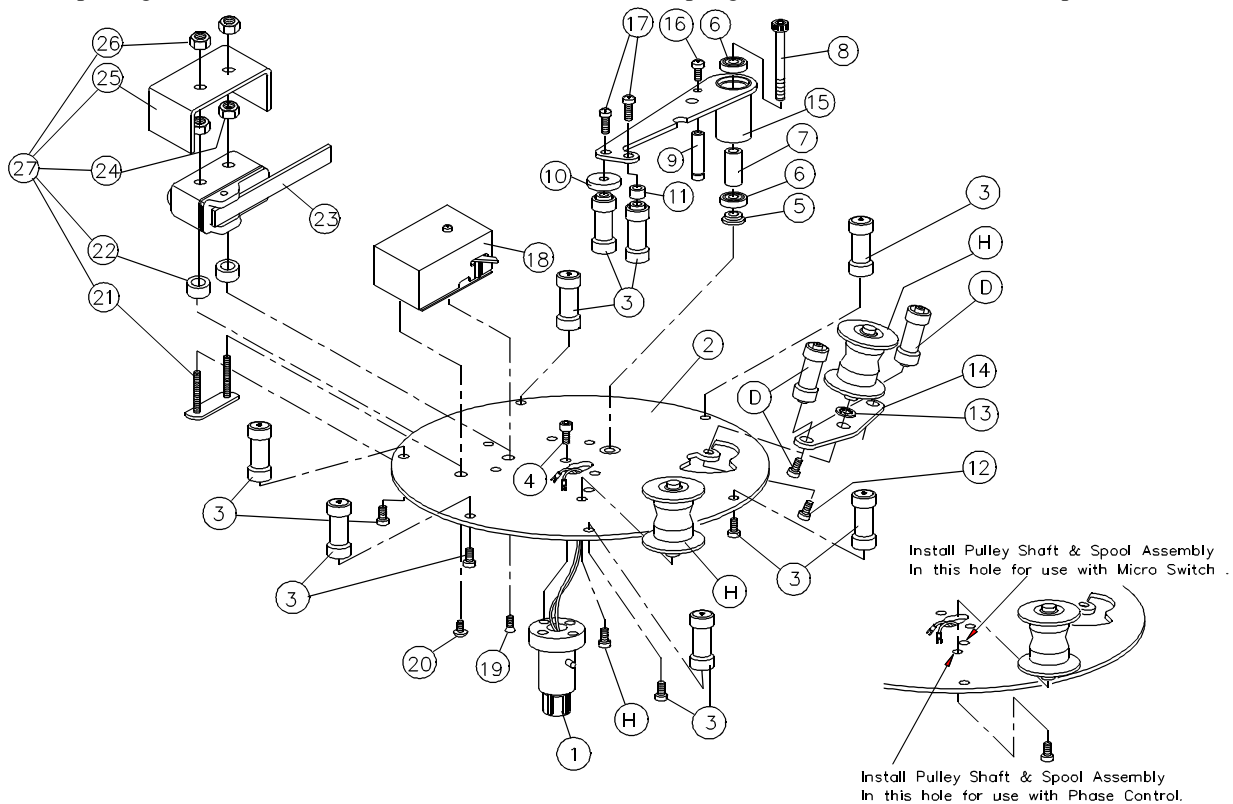


# Plug-In 35mm MIC #3044 and Plug-In 35mm PHC #3070 Control Plate Assembly Parts List

## PRODUCT INFORMATION BULLETIN #2150

**NOTE:** #3044 Control Plate Assembly Plug-in 35mm MIC and #3070 Control Plate Assembly Plug-in 35mm PHC can be used on older systems that do not have plug-in spindles. Disconnect the red and blue wire from the switch terminals. Unbolt the plug-in hub (item 1 below) from the bottom of the control plate.

**NOTE:** When replacing #2536, Micro Switch-Flat Blade-HD, remove the spring from behind the switch arm if present.



- |  |  |
|--|--|
| D) 2602 Keeper Shaft & Spool Assembly                      | 13) 1078 Lockwasher #10-Internal Tooth                             |
| H) 1774 Pulley Shaft #5 & Pulley Assy. 35mm                | 14) 1548 Control Plate Spool Keeper Bracket                        |
| 1) 2357 Control Plate Plug-in Adapter<br>(includes item 4) | 15) 1691 Control Plate Sensor Arm & Hub                            |
| 2) 1593 Control Plate & Nut Sub-Assy. 35mm                 | 16) 1069 Screw PTH 8-32 x 3/8"                                     |
| 3) 1513 Control Plate Spool & Shaft Assy.                  | 17) 2181 Screw PPH 10-32 x 3/4"                                    |
| 4) 1064 SHCS 8-32 x 3/8"                                   | 18) 2430 Phase Control W/Mount Package<br>(Includes items 19 & 20) |
| 5) 2380 Control Plate Sensor Arm Washer                    | 19) 1070 Screw PFH 8-32 x 3/8"                                     |
| 6) 2407 Bearing 5/8 OD x 1/4 ID                            | 20) 1069 Screw PTH 8-32 x 3/8"                                     |
| 7) 2379 Control Plate Sensor Arm Spacer                    | 21) 1469 Switch Adjusting Plate                                    |
| 8) 2408 SHCS 1/4-28 x 2"                                   | 22) 1240 Spacer 5/16" x 13/64" x 1/4"                              |
| 9) 1265 Shaft #9   | 23) 2536 Micro Switch-Flat Blade-HD                                |
| 10) 2006 Control Plate Arm Film Spacer                     | 24) 1083 Hex Nut, 6-32   |
| 11) 1153 Control Plate Arm Spool Spacer Float              | 25) 1595 Control Plate Switch Cover                                |
| 12) 1592 SHCS 10-32 x 1/2"                                 | 26) 1084 Locknut, Nylon Insert 6-32                                |
|  | 27) 3610 Micro Switch Mount Hardware                               |